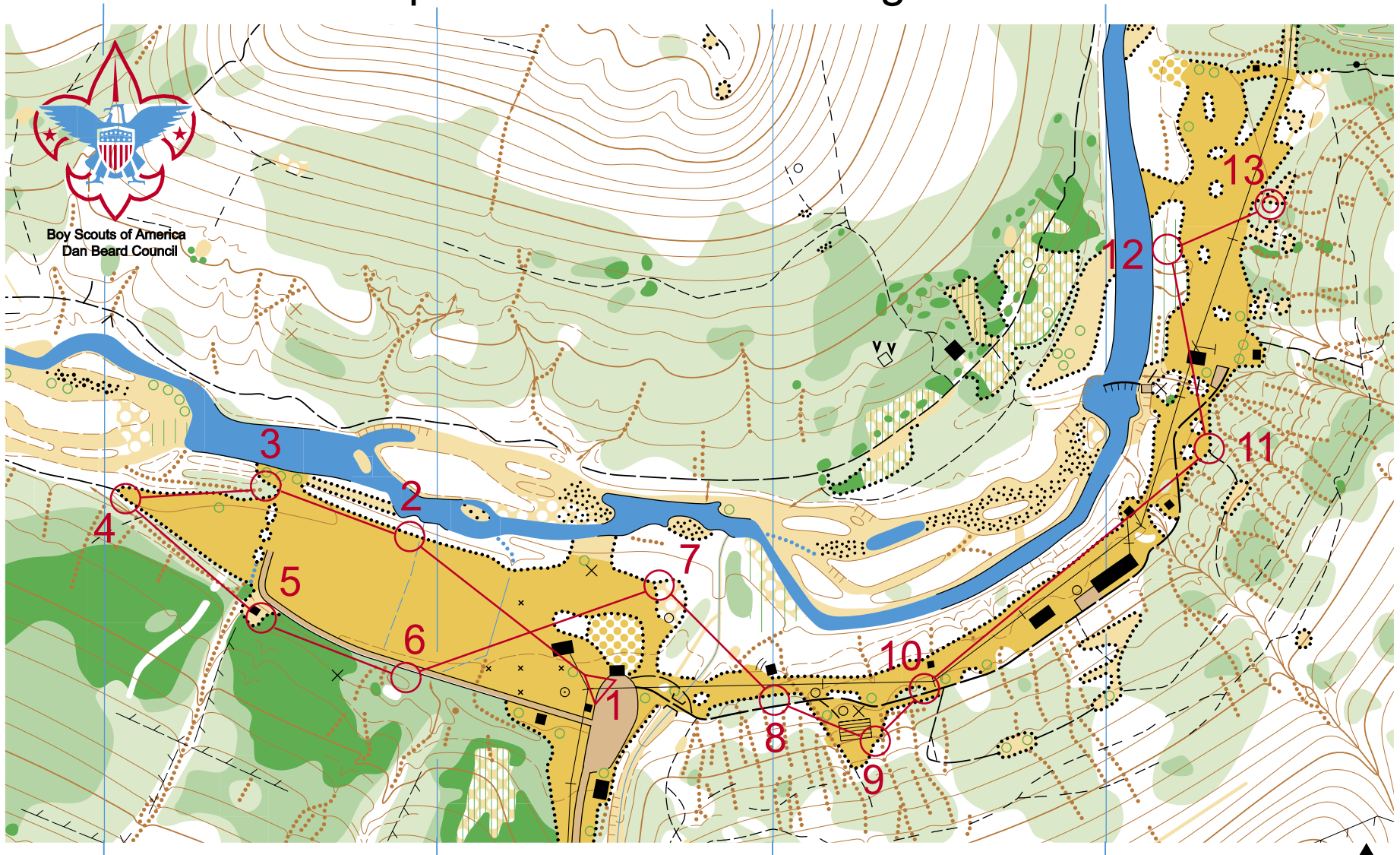


# Camp Michaels Orienteering Course



**Legend**

	paved road		power line		open land
	pavement, gravel		buildings		rough open
	dirt road		ruins		open with scattered trees
	vehicle trail		cemetery, misc. object		rough open with scattered trees
	large foot path		cairn, rocky pit, pillar		open forest
	small foot path		boulder: small, large		vegetation: slow run
	indistinct path		distinct tree		vegetation: difficult to run
	narrow ride		passable cliffs		vegetation: difficult to walk, fight
	stone wall, ruined stone wall		impassable cliff		dense undergrowth
	fence, ruined fence		boulder field, stony ground		distinct vegetation boundary
	uncrossable fence				
			contours/index contours, form line		
			gully, dry ditch		
			small knoll, depression		
			pit, broken ground		
			earth bank		
			stream: wide, small		
			spring, waterhole		
			lake, uncrossable river		
			intermittent stream		

0 164 820 feet (250 meters)

Blue gridlines are Magnetic North  
Contour interval 5 meters (16.4 ft.)

Map courtesy of Orienteering Cincinnati  
<http://www.ocin.org>  
Basemap - Boone County GIS  
Fieldwork & Drafting - Vladimir Zherdev 2001  
Production - Mike Minium & Ron Reynolds  
Course installed by Pete Watkins 2003

Camp Michaels is private property, and requires an Application for Use of Camp Property to use.